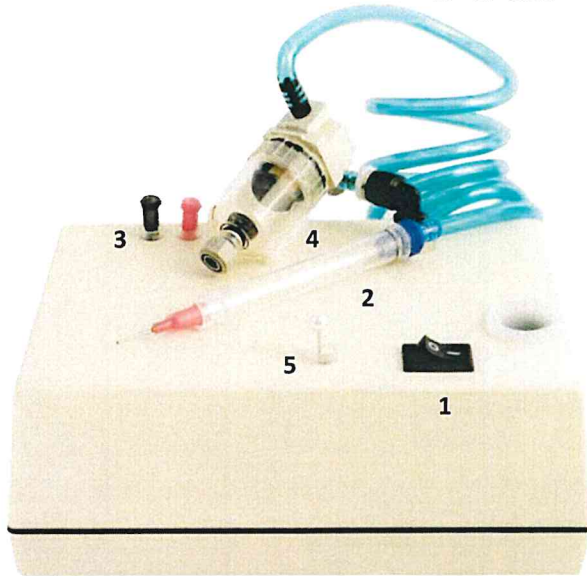


Jodi®-Pro Plus



1. Vacuum On/Off Switch
2. Removable Vacuum Tube
3. Inserts for Needles
4. Filtered Liquid Trap
5. Shallow Insert for Reamers

Before using on a hearing instrument, memorize the tonal change in the vacuum pump (clean needle verses plugged needle) by positioning your finger on and off the needle end.

1. Turn on vacuum, slowly work needle around and down the sides of the sound bore, continuing till you bottom out .If this was not satisfactory, use Ammonia at the receiver to break down ear wax/oil and then vacuum, repeating as necessary.

The clear tube is easily removed for cleaning, disinfecting or sterilizing.

Do take some time to read the Hearing Aid Tech. Notes

1. Our pink needle is specifically designed for maximum vacuum efficiency in CIC's, ITC, ITE, and RIC sound bores.

The Light Blue needle is sized for open ear Thin Tubes.

Our Black needle is oversized for Ear Molds.

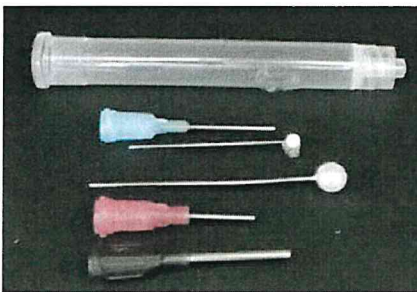
2. Use of force will bend these needles and ruin Hearing Instruments.

Changing this needle to another size will decrease vacuuming efficiency in the sound bore and the receiver nubbin

CLEANING

**DO NOT IMMERSE IN LIQUIDS OR APPLY LIQUIDS BY POURING ONTO UNIT.
FIRST--Test your preferred cleaning product on a small area.**

Alcohol or household ammonia is very effective.



CONTAINS

- 1- Spare Tube
- 1- Lt. Blue Open Ear Thin Tube Needle and Reamer
- 1- Steel Reamer for Pink and Black Needle
- 1- Pink ITE, ITC, CIC, RIC Needle
- 1- Black BTE Ear Mold Needle

LIQUID FILTER

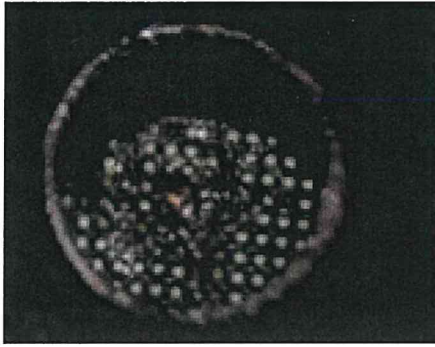
Instructions are located on back of unit.

Hearing instruments are small, the bowl is small, small amounts of ammonia will accomplish the task.

It is OK to leave liquid in bowl, but **keep level below the internal filter**, it should then be emptied. As the pump runs, small amounts will evaporate which is helpful in reducing the need for emptying the bowl.

Depress white ring and hold- thereby releasing internal fingers allowing you to pull blue tubing out of elbow facilitating the removal of the entire filter assembly from the Velcro. Ignore the grey drain knob on bottom of the clear bowl as it is only useful for air pressure applications.

Unscrew clear bowl, clean, reinstall clear bowl—take care when screwing bowl back onto threads.



Receiver Screen with some debris.
A light is behind the holes to better show the openings.

Note: a Video Otoscope will not Amplify adequately to distinguish a clear hole verses an oil filled hole
Oil will block sound waves.

Hearing Aid Tech. Notes

Dear Professional,

Hearing Instrument design forces us to use a small needle, therefore it is important to understand that my needle is highly efficient and use of other "milled needles" will dramatically reduce its ability to pull debris through.

When removing Cerumen, remember it comes in many textures:

Hard and Dry, in all sizes and shapes— Best picked and vacuumed.
Large pieces will sit on end of needle, remove from tip of needle.

Soft and Sticky – Slowly vacuum till clean

Oily- Vacuum till clean, then you may need to add a grease cutting agent to penetrate the small holes of the damped receiver screen as shown. Then vacuum the screen and repeat two more times to get all the holes cleared of oil.

Clear Non Sudsing Ammonia is excellent Cerumen emulsifier.

A single drop of ammonia dispensed from a size 20 needle is enough to liquefy this very small area.

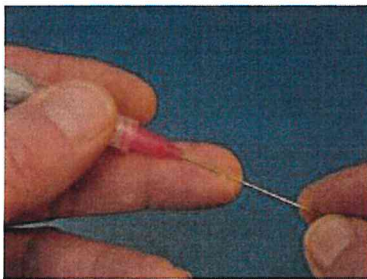
Heads up — the more ammonia you introduce into the filter, the shorter the life of the filter. There is an optional liquid filter available.

Observation under a microscope:

Alcohol did not alter Cerumen, got it wet.

Hydrogen Peroxide also did not alter Cerumen, but rather made bubbles which moved particulates around.
Emulsion did not take place.

Clear Non-Sudsing Ammonia turns Cerumen into a "bean soup" which dramatically improves the cleaning process.



USING REAMER

Create an indent on your finger with needle,
place reamer in the indent and slide into needle.

NOTES

A plugged needle will cause flow indicator ball NOT to rise.
A plugged needle will act as a ramrod and push wax deeper.
Pushing needle in too fast without paying attention will produce undesired results.
Pushing too hard on Microphone will dislodge Mic. from faceplate.
Old Receiver tubes are prone to coming loose, be gentle.

A Mic with a Damped Screen (like shown above)—It's OK to use Ammonia.—Don't Push on Mic.

A Mic that is Undamped (you will see no screen)—It's NOT OK to use any liquids. Don't Push on Mic.

A Receiver Damped (like shown above)—It's OK to use Ammonia.

**A Receiver Undamped (no screen)—It's OK to use Ammonia—How far in the nubbin did the wax go?
It is already dead, so persevere with patience, a little ammonia, a small pick to stir things up, and vacuum.**

Handy Tools:

**Picks, liquid dispenser, 3CC Syringe, #20 Applicator Needle from your supply distributor,
Clear Non Sudsing Household Ammonia- from your grocery store.**

READ ALL INSTRUCTIONS BEFORE USING IMPORTANT SAFEGUARDS

*THIS PRODUCT IS INTENDED FOR THE CLEANING OF HEARING AID DEVICES
AND NOT TO BE USED TO CLEAN EARS.*

DANGER – to reduce the risk of electric shock:

1. Always unplug this product immediately after using.
2. Do not use while bathing.
3. Do not place or store product where it can fall or be pulled into a tub or sink.
4. Do not place in or drop into water or other liquid.

WARNING – To reduce the risk of burns, electrocution, fire or injury to persons:

1. **Do not get the syringe end near eyes or ears, as the needle can puncture skin.**
2. **Do not clean ears with this product.**
3. **If your product comes with a Desiccant, and you are drying it out by use of a heating source— understand that the desiccant will get very hot and will burn your skin.**
4. **This product is intended to clean hearing aids, any unauthorized use will void any and all warranties.**
5. A product should never be left unattended when plugged in.
6. Close supervision is necessary when this product is used by, on, or near children or invalids.
7. Use this product only for its intended use as described in this manual. Do not use attachments not recommended by the manufacturer.
8. Never operate this product if it has a damaged cord or plug, if it is not working properly, if it has been damaged, dropped into water. Return the product to the manufacturer for examination and repair.
9. Keep the cord away from heated surfaces.
10. Never use while sleepy or drowsy.
11. Do not use where aerosol (spray) products are being used or where oxygen is being administered.

CAUTION — RISK OF ELECTRIC SHOCK, DO NOT REMOVE COVER. REFER SERVICING TO QUALIFIED PERSONNEL

This product is for use on a nominal 12VDC circuit. Use the appropriate AC to DC adapter as supplied with this product when plugging in to household current. This product is factory equipped with a specific electric cord and plug to permit connection to a proper electric circuit. Make sure that the product is connected to an outlet having the same configuration as the plug. Do not modify the plug provided – if it will not fit the outlet, have the proper outlet installed by a qualified electrician. If the product must be reconnected for use on a different type of electrical circuit, the reconnection should be made by qualified service personnel.

WARRANTY

If wax or debris is found inside unit, it will be assumed that vacuuming occurred without the protection of the supplied filter assemblies. Please do not clean filter assemblies. Replacement filters are available. A \$30.00 cleaning charge may be applied.

Manufacturer will repair or replace the product for all defects and workmanship for a period of 3 Years from the date of purchase.

Syringe assembly and needle are excluded from this or any other warranty.

Manufacturer is not responsible for incidental or consequential damages arising from accident, abuse, misuse, or failure to follow instructions for the product. Any alteration of the product voids this warranty.

To activate this warranty, purchaser must show proof of purchase date of the product. If purchased through JodiVac, your warranty will be automatically activated.

Purchaser is responsible for shipping and handling costs when returning the product for warranty service.

JODI-VAC IS NOW A PART OF
GREEN'S OTO SUPPLIES!
jodivac.com
greensoto.com

Contact McKenzie at
customerservice@greensoto.com
541-735-3244

Green's Oto Supplies, INC
330 Ruby Ave
Eugene, OR USA